

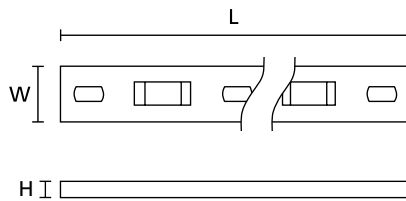
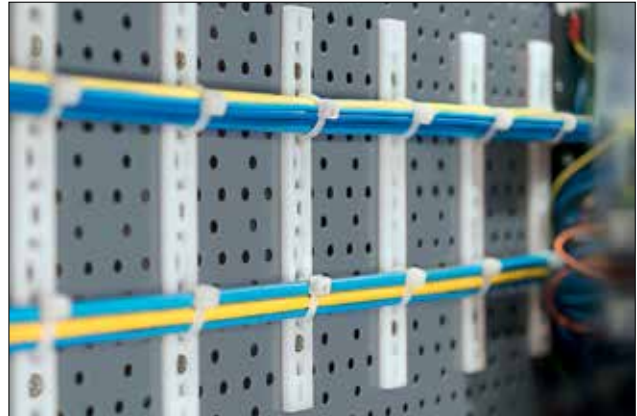
Mounting Plates

Cable Tie Mounting Plates

Mounting Plates allow multiple cables to be run in parallel. Mounts are secured with two screws. Cables are attached to the plates by running a cable tie through any of the available slots.

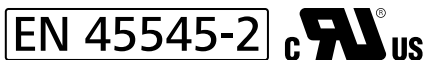
Features and Benefits

- Mounting plates allow multiple bundles to run parallel.
- The mounts are secured using two screws, while the bundles are attached using cable ties in any of the available slots.



PART NO.	TYPE	Cable Tie Series	Mounting Screw Type	Length (L) in. (mm)	Width (W) in. (mm)	Height (H) in. (mm)	Material	Color	Pkg. Qty.
MP1M5.NN3P	MP1M5	T18 - T50	#10 (M5) Screw	1.8 (44.4)	0.5 (12.7)	0.1 (3.2)	PA66	Natural	100
MP1M3.NN3P	MP1M3	T18 - T50	#6 (M3) Screw	1.8 (44.4)	0.5 (12.7)	0.1 (3.2)	PA66	Natural	100
MP2M3.NN3P	MP2M3	T18 - T50	#6 (M3) Screw	3.0 (76.2)	0.5 (12.7)	0.1 (3.2)	PA66	Natural	100
MP2M5.NN3P	MP2M5	T18 - T50	#10 (M5) Screw	3.0 (76.2)	0.5 (12.7)	0.1 (3.2)	PA66	Natural	100
MP3M3.NN3P	MP3M3	T18 - T50	#6 (M3) Screw	4.3 (108.0)	0.5 (12.7)	0.1 (3.2)	PA66	Natural	100
MP3M5.NN3P	MP3M5	T18 - T50	#10 (M5) Screw	4.3 (108.0)	0.5 (12.7)	0.1 (3.2)	PA66	Natural	100
MP4M3.NN3P	MP4M3	T18 - T50	#6 (M3) Screw	5.5 (139.8)	0.5 (12.7)	0.1 (3.2)	PA66	Natural	100
MP4M5.NN3P	MP4M5	T18 - T50	#10 (M5) Screw	5.5 (139.8)	0.5 (12.7)	0.1 (3.2)	PA66	Natural	100
MP5M3.NN3P	MP5M3	T18 - T50	#6 (M3) Screw	6.8 (171.6)	0.5 (12.7)	0.1 (3.2)	PA66	Natural	100
MP5M5.NN3P	MP5M5	T18 - T50	#10 (M5) Screw	6.8 (171.6)	0.5 (12.7)	0.1 (3.2)	PA66	Natural	100
MSMP6-109C2*	MSMP6/10	T18 - T120	#10 (M5) Screw	9.5 (241.0)	0.6 (15.8)	0.2 (5.3)	PA66	Natural	100
MSMP6-69C2*	MSMP6/6	T18 - T120	#6 (M3) Screw	9.6 (244.0)	0.6 (15.8)	0.2 (5.3)	PA66	Natural	100

Dimensions are approximate and subject to technical changes. Use Part No. for ordering and Type for specification purposes.
 *This product meets UL standards. Please see appendix for specific file numbers.



Please note! Not all products listed on this page may have this approval. Please check our website for latest approvals.